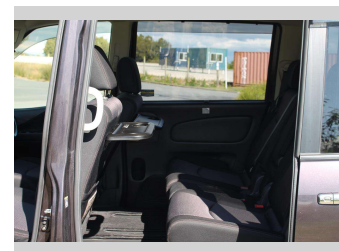
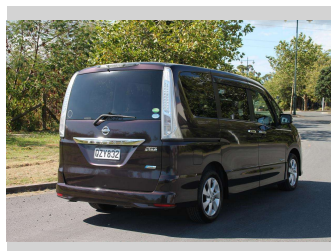
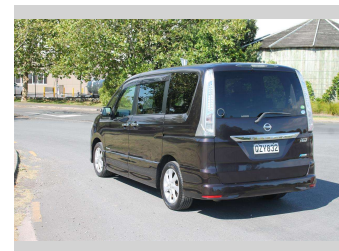


# 2013 Nissan Serena Hybrid



**Purchase Price** **\$9,500**

Includes GST  
Excludes on-road costs of \$500

Finance may be available on this vehicle. Ask one of our friendly staff for more information.

Gain peace of mind with Mechanical Breakdown Insurance. **Ask us how.**

**Top features**

None Listed

Body Style  
**Station Wagon**

Odometer  
**112,720 km**

Engine  
**1997 cc, Hybrid**

Fuel Type  
**Petrol**


Transmission  
**Automatic**

Wheels  
-

VIN  
-

Interior  
**Black**

Safety



Based on 2024 VSRR rating

Reg No.  
**QZY832**

Ext Colour  
**purple**

History  
-

Seats  
**7 seats**

CO2 Emissions  
**★★★★☆**  
**171 grams/km**

Energy Economy  
**★★☆☆☆**  
**Annual fuel cost of \$2,860**  
**7.3L per 100km**

Cost per year is an estimate based on petrol price of \$2.80 per litre and an average distance of 14000 km. Emissions and Energy Economy figures standardised to 3P WLTP.

**Stock ID: 6844**



Payless Performance | Phone 09 940 9495 | Email  
paylesscarsteam@gmail.com  
230 Neilson Street, Onehunga, Auckland 1061, New Zealand  
www.paylesscars.co.nz